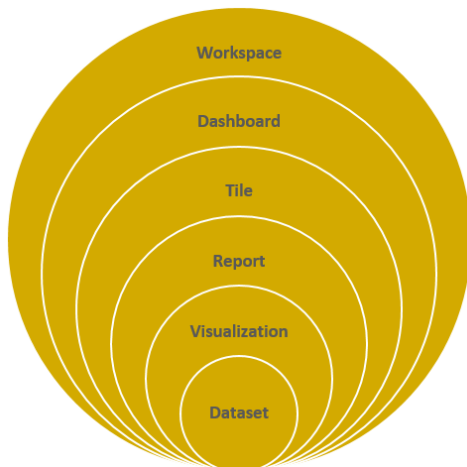


# Introduction to Microsoft Power BI

## Building Blocks of Power BI

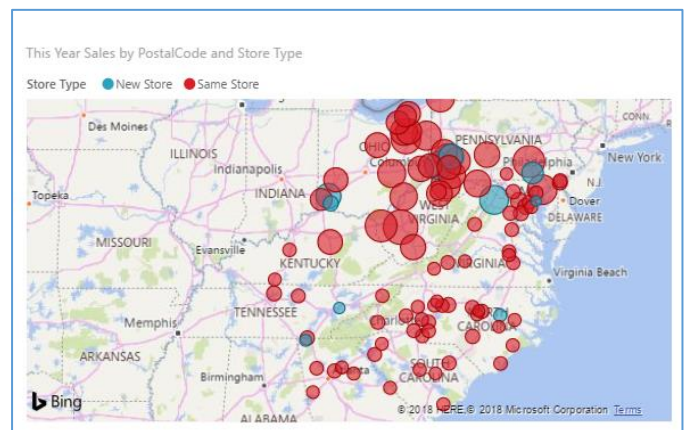
It all starts with the **dataset**, which simply means the data you have connected to. These datasets are then added to **reports** as **visualizations**, which present that data in a graphical way.

The Power BI web and mobile apps go a step further with **dashboards**, which allow you to collect visualizations from different reports into a single location.

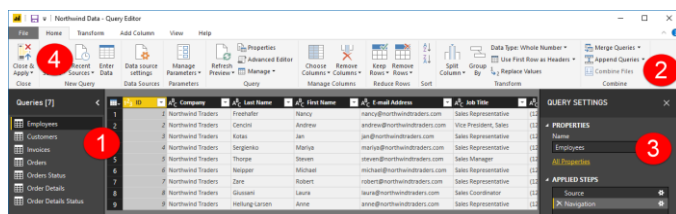


Each dashboard is made up of **tiles**, which are simply visualizations linked back to the original report. These dashboards can be collected into **workspaces**.

For example, sales by region might be presented as a map, with a bubble representing each amount:



## The Query Editor Interface

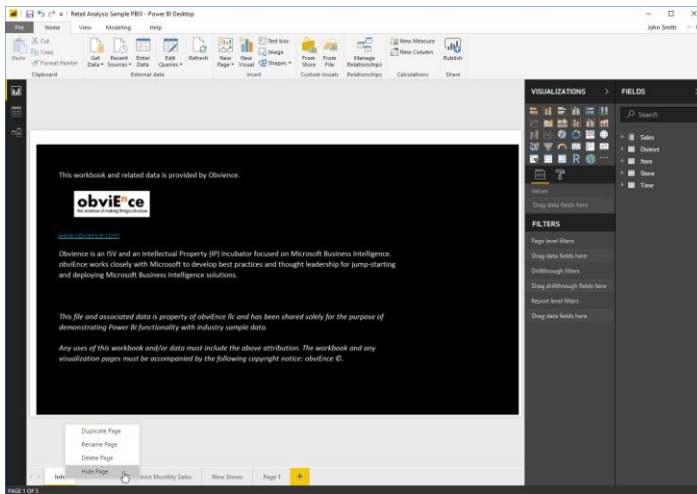


On the **left (1)**, you will see a list of queries, with the data displayed in the center pane. Its settings can then be modified using the commands on the **ribbon (2)**. These settings are listed in the **Query Settings pane (3)**, which we will take a closer look at in a moment. Once you have finished making your changes, click Home→ **Close & Apply (4)**.

## Managing Report Pages

### Showing and Hiding Pages

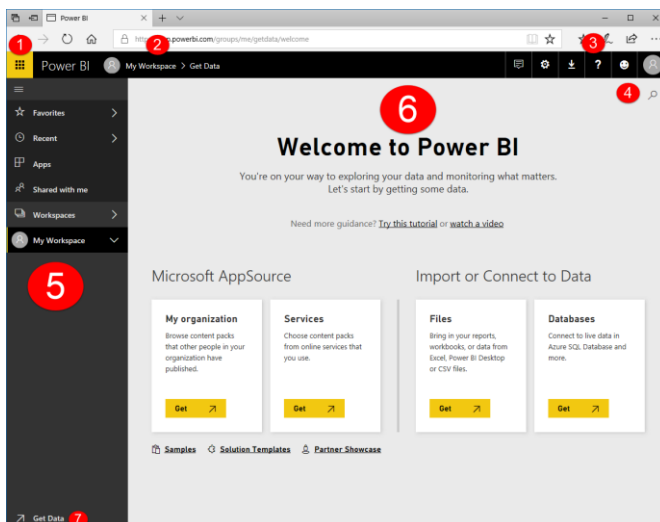
To temporarily hide a page, right-click its tab and click Hide Page:



The page tab will then be grayed out. You can show it again by right-clicking the page tab again and de-selecting Hide Page.

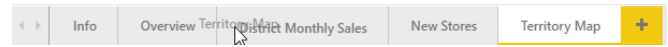
You can use this same right-click menu to duplicate the current page, rename the page, or delete it.

## The Web App Interface



### Changing Page Order

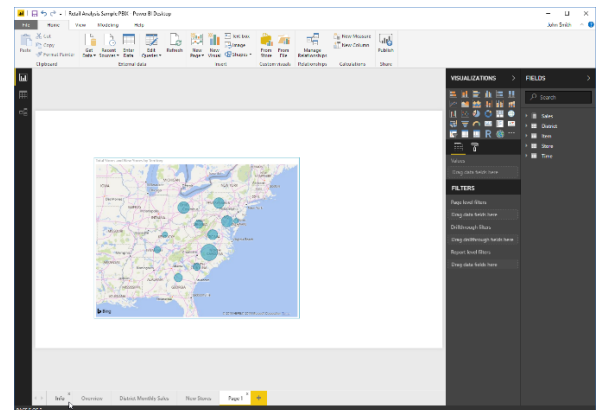
To change the order of pages, simply click and drag the tab:



Release your cursor when you have reached the desired location.

### Navigating Through Pages

To view a different report page, simply click its tab at the bottom of Report view:



1. App Launcher
2. Breadcrumb Trail
3. Office 365 Commands
4. Search field
5. Navigation pane
6. Canvas
7. Get Data